

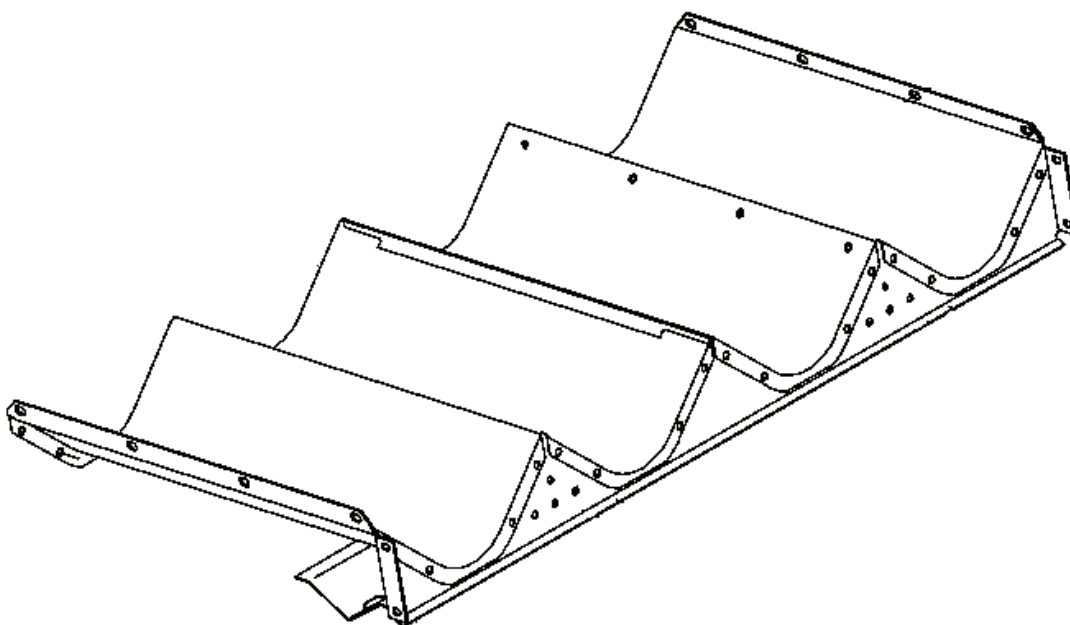
PLEASE READ THE ENTIRE INSTRUCTION SHEET BEFORE STARTING INSTALLATION.

PLEASE REFER TO THE OPERATORS MANUAL FOR YOUR SPECIFIC COMBINE FOR PERTINENT SAFETY PRECAUTIONS THE TERMS. "LEFT", "RIGHT", "FRONT", & "REAR" ARE DETERMINED BY FACING IN THE DIRECTION THE COMBINE WILL TRAVEL WHEN IN USE.

IMPORTANT:

Before you begin installation, compare the contents with the enclosed "Packing Slip" to confirm that you have received the correct panels and associated hardware for your model header. Please refer to the operators manual for your specific combine for pertinent safety precautions.

Combine Model: 9650 STS, 9660 STS, 9750 STS, 9760 STS, 9860 STS, 9880 STS

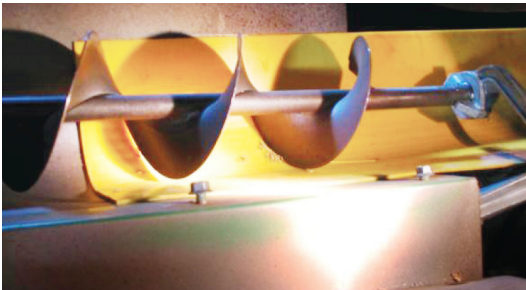


Visit us online at www.lundellplastics.com to see other innovative products!

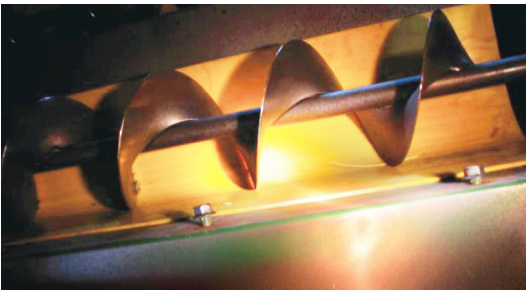
John Deere Auger Bed Trough Liner EXOPLATE INSTALLATION INSTRUCTIONS



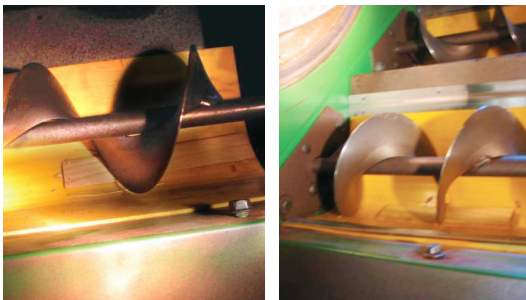
1. Remove concaves to allow extra room to work. Clean the entire length of the auger trough's to remove all dirt, crop residue and any patches/repairs that would restrict the poly liners from laying flat against the trough.



2. Insert liner (ABJP1138) under the auger, slide the liner under the auger from the rear of the combine until it is against the front of the trough. The liner is designed to be approximately 1 inch beyond the rear end of the trough.



Note: It is important that there is sufficient clearance approximately 1/8" between the auger and the liner. You may need to loosen the bolts on the rear bearing mount to even the clearance between the two troughs. Also, notice we removed the crop dividers for extra room during installation.



3. Wedge the liners tight against the bottom of the trough with the wood shims provided. Be sure to set the clearance between the auger and liners evenly between the two troughs. Tighten the bolts for the rear bearing bracket once the clearance is set.
4. Be sure the hold down strip (ABJHD3075) is positioned correctly along the entire length of the part prior to and while securing. It should overlap the poly by 5/8 of an inch.

When using power tools, basic safety precautions should always followed to reduce the risk of personal injury. WEAR SAFETY GLASSES OR GOGGLES.

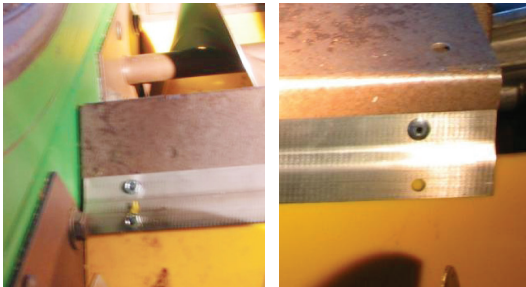
Visit us online at www.lundellplastics.com to see other innovative products!



5. Hold the strip in position, working from the center outward, drill and rivet one hole at a time. Be sure to install each rivet before moving on to the next hold. If you do not have a rivet gun capable of pulling 3/16 steel rivets you may use the self drilling screws in place of rivets. Both are provided for your convenience.



6. Secure the other side of the liner with a second hold down strip following the same procedures as Step 4 and 5.



7. To complete the installation, drill and rivet the bottom hold at the front end of each bottom hole at the front end of each hold down strips.
Note: Do not rivet the rear "output" end! The liner must be allowed to expand and contract with temperature change.



8. Install the remaining liners using the same procedures as above.

WARNING Proper application, installation, and operation of any machine and/or installation incorporating products sold by Lundell Plastics Corporation™ is the responsibility of the purchaser and/or end user. All local, state, and federal safety codes must be followed. Lundell Plastics Corporation™ is specifically not responsible for property damage and/or personal injury, direct or indirect, for damages and/or failures caused by improper design, application, installation, operation, abuse, and/or misuse of its' products. Conveyors must never be installed, readied for operation, or operated without proper covers and guards installed and securely in place.

Visit us online at www.lundellplastics.com to see other innovative products!